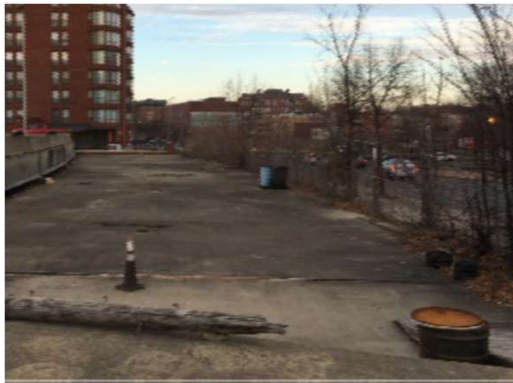


DC-Owned Parking Deck



HISTORY:

- Parking Deck was built by the District of Columbia in 1975-1978

OPPORTUNITIES:

- The deck occupies nearly 2 acres (89,000 square feet—deck only)
- Proposals have been submitted for development of the deck for open space, mixed-use development or a combination of both

CHALLENGES:

- Unknown status of DMPED RFP that set out three possible proposals for development
- Unknown status of parking structure's condition, structural integrity and development potential
- Complicated ownership structure—DC owns top level and air rights, lower level is privately owned

New Aspiration for Portion of DC-Owned Parking Deck

■ Key Direction/Aspiration:

- ✓ A “village green” that acts as MVT’s backyard and where all feel comfortable hanging out and playing



New Aspiration for Portion of DC-Owned Parking Deck

- **Key Features:**

- ✓ Place for friends and family to gather, have fun and be playful with multi-use areas to hear music, watch movies, host events and play court/fields sports

- **Key Activities:**

- ✓ Tables, chairs, play structure, grills, recreation/playing fields (basketball, bocce, soccer), events like farmers markets, food carts, concerts