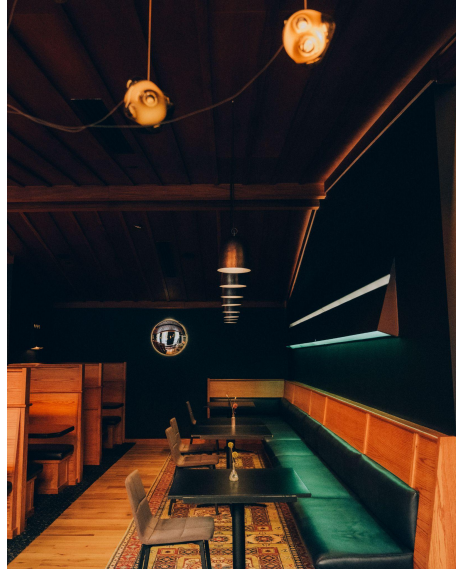
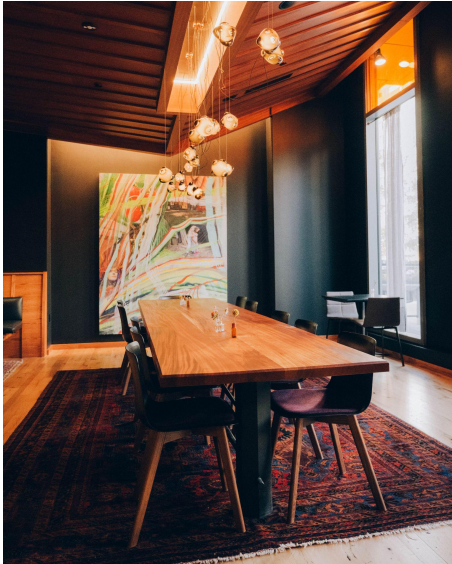


la Betty



420 K Street NW DC 20001



Host your private event at La Betty!

La Betty is a warm and vibrant restaurant that includes custom wood booths, a large 10-12 person communal table, a variety of 2-tops and 4-tops, and two restrooms. The restaurant seats 70 but there is capacity for up to 130 guests. Some of the tables are movable as well if you wanted to open up the space a bit more.

We have Sonos for you to play music or you'd be welcome to bring in live music or a DJ.

We have a large bar, open kitchen with top of the line appliances, prep kitchen, storage facility, and walk-in refrigeration / freezers. We're not currently serving food from the restaurant, so this is a raw space rental, and you are welcome to bring in caterers / bartenders. The entire facility is handicapped accessible.

Floor plans upon request.

Email tessa@la-betty.com for more information.